

OneTaq[®] Hot Start DNA Polymerase



1-800-632-7799
info@neb.com
www.neb.com



M0481S



200 units 5,000 U/ml Lot: 0101512

RECOMBINANT Store at -20°C Exp: 12/17

Description: OneTaq Hot Start DNA Polymerase is an optimized blend of Taq and Deep Vent_R DNA polymerases combined with an aptamer-based inhibitor. The 3' → 5' exonuclease activity of Deep Vent DNA Polymerase increases the fidelity and robust amplification of Taq DNA Polymerase (1) and the hot start formulation combines convenience with decreased interference from primer dimers and secondary products. The OneTaq Reaction Buffers and High GC Enhancer have been formulated for robust yields with minimal optimization, regardless of a template's GC content.

The inhibitor binds reversibly, blocking polymerase activity at temperatures below 45°C. The polymerase is activated during normal cycling conditions, allowing reactions to be set up at room temperature. OneTaq Hot Start DNA Polymerase does not require a separate high temperature incubation step to activate the enzyme and can be used in typical Taq-based cycling protocols.

AMPLICON % GC CONTENT	RECOMMENDED DEFAULT BUFFER	OPTIMIZATION NOTES
≤ 50% GC	OneTaq Standard Reaction Buffer	Adjust annealing temperature, primer/template concentration, etc. if needed.
50–65% GC	OneTaq Standard Reaction Buffer	OneTaq GC Reaction Buffer can be used to improve performance of difficult amplicons
> 65% GC	OneTaq GC Reaction Buffer	10–20% OneTaq High GC Enhancer may be added to reactions with OneTaq GC Reaction Buffer to enhance performance of difficult amplicons

Notes: The OneTaq High GC Enhancer should not be used alone. It should be added only to the OneTaq GC Reaction Buffer and will typically enhance yields when other conditions have failed.

OneTaq Hot Start DNA Polymerase is supplied with two 5X buffers: (Standard and GC), as well as a High GC Enhancer solution. For most routine and/or AT-rich amplicons (Lambda, etc.) or complex amplicons with up to ~65% GC content, OneTaq Standard Reaction Buffer provides robust amplification. For GC-rich amplicons, the OneTaq GC Reaction Buffer can improve both performance and yield. For particularly high GC or difficult amplicons (i.e. ≥ 75% GC), the OneTaq High GC Enhancer can be added at a final concentration of 10–20% to reactions containing OneTaq GC Reaction Buffer.

Source: An *E. coli* strain that carries the Taq DNA Polymerase gene from *Thermus aquaticus* YT-1 and an *E. coli* strain that carries the Deep Vent_R DNA Polymerase gene from *Pyrococcus* species GB-D.

Applications:

- High Sensitivity PCR
- High Throughput PCR
- Routine PCR
- GC-rich PCR
- AT-rich PCR
- Colony PCR
- Long PCR (up to ~6 kb genomic)

Supplied in: 100 mM KCl, 10 mM Tris-HCl (pH 7.4), 0.1 mM EDTA, 1 mM dithiothreitol, 0.5% Tween[®] 20, 0.5% IGEPAL[®] CA-630 and 50% glycerol

Reagents Supplied with Enzyme:

5X OneTaq Standard Reaction Buffer
5X OneTaq GC Reaction Buffer
OneTaq High GC Enhancer

Reaction Conditions: 1X OneTaq Standard Reaction Buffer, DNA template, primers, 200 μM dNTPs (not included) and 1.25 units of OneTaq Hot Start DNA Polymerase in a total reaction volume of 50 μl.

1X OneTaq Standard Reaction Buffer:

20 mM Tris-HCl (pH 8.9 @ 25°C)
1.8 mM MgCl₂
22 mM NH₄Cl
22 mM KCl
0.06% IGEPAL CA-630
0.05% Tween 20

1X OneTaq GC Reaction Buffer:

80 mM Tris-SO₄ (pH 9.2 @ 25°C)
2 mM MgSO₄
20 mM (NH₄)₂SO₄
5% Glycerol
5% DMSO
0.06% IGEPAL CA-630
0.05% Tween 20

OneTaq High GC Enhancer:

10 mM Tris-HCl (pH 9.2 @ 25°C)
25% DMSO
25% Glycerol

Unit Definition: One unit is defined as the amount of enzyme that will incorporate 15 nmol of dNTP into acid insoluble material in 30 minutes at 75°C.

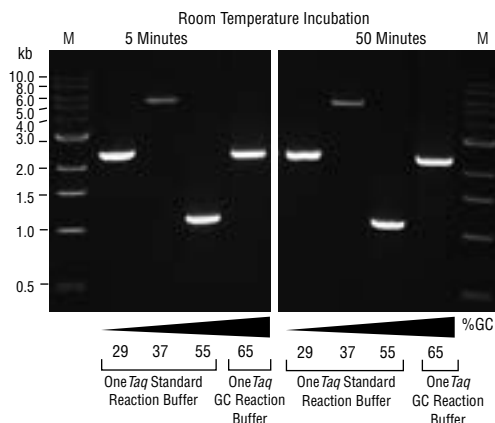
Unit Assay Conditions: 1X ThermoPol[®] Reaction Buffer, 200 μM dNTPs including [³H]-dTTP and 15 nM primed M13 DNA.

Heat Inactivation: No

Quality Control Assays

5 kb Lambda PCR: 25 cycles of PCR amplification of 5 ng Lambda DNA with 0.625 units of OneTaq Hot Start DNA Polymerase in a 25 μl reaction in the presence of 200 μM dNTPs, 0.2 μM primers and 1X OneTaq Standard Reaction Buffer resulted in the expected 5 kb product.

High Sensitivity PCR Assay: 30 cycles of PCR amplification of 10 pg Lambda DNA with 0.625 units of OneTaq Hot Start DNA polymerase in a 25 μl reaction containing 50 ng human genomic DNA, 200 μM dNTPs, 0.2 μM primers and 1X OneTaq Standard Reaction Buffer resulted in a significant, enzyme dependent increase in the yield of the 2 kb Lambda product as compared to a standard PCR reaction. In non-hot start PCR control reactions, characteristic non-specific bands are produced from this set of primers and template.



Amplification of a selection of sequences with varying GC content from human and C. elegans genomic DNA using OneTaq Hot Start DNA Polymerase. The presence or absence of an extended room temperature incubation does not affect performance. GC content is indicated above gel. Marker M is the 1 kb DNA Ladder (NEB #N3232).

(see other side)

Buffer-dependent GC-rich (> 65% GC) PCR:

30 cycles of PCR amplification of 10 ng of human genomic DNA with 0.625 units of OneTaq Hot Start DNA Polymerase in a 25 μl reaction in the presence of 200 μM dNTPs, 0.2 μM primers and 1X OneTaq GC Reaction Buffer resulted in the buffer-dependent production of the 737 bp GC-rich product.

Enhancer-dependent High GC (> 70% GC) PCR:

30 cycles of PCR amplification of 10 ng of human genomic DNA with 0.625 units of OneTaq Hot Start DNA Polymerase in a 25 μl reaction in the presence of 200 μM dNTPs, 0.2 μM primers, 20% OneTaq High GC Enhancer and 1X OneTaq GC Reaction Buffer resulted in the enhancer-dependent production of the 627 bp high GC product.

Inhibition Assay: Greater than 95% inhibition is observed after a 16 hour incubation at 25°C in a 50 μl primer extension assay containing 2.5 units of OneTaq Hot Start DNA Polymerase in 1X ThermoPol Reaction Buffer with 200 μM dNTPs including [³H]-dTTP and 15 nM primed single-stranded M13mp18.

Note: Product specifications for individual components in the OneTaq Hot Start DNA Polymerase mix are available separately.

PCR

The Polymerase Chain Reaction (PCR) is a powerful and sensitive technique for DNA amplification (2). Taq DNA Polymerase is an enzyme widely used in PCR (3). OneTaq Hot Start DNA Polymerase allows for greater amplification sensitivity across a wide variety of amplicons and increased ease of reaction setup. The following guidelines are provided to ensure successful PCR using New England Biolabs' OneTaq Hot Start DNA Polymerase. These guidelines cover most routine PCR reactions. Specialized applications may require further optimization.

Reaction Setup:

Due to the presence of the inhibitor, reactions can be assembled on the bench at room temperature and transferred to a thermocycler. *No separate activation step is required to release the inhibitor from the enzyme.*

Add to a sterile thin-walled PCR tube:

COMPONENT	25 μ l REACTION	50 μ l REACTION	FINAL CONCENTRATION
5X OneTaq Standard Reaction Buffer*	5 μ l	10 μ l	1X
10 mM dNTPs	0.5 μ l	1 μ l	200 μ M
10 μ M Forward Primer	0.5 μ l	1 μ l	0.2 μ M
10 μ M Reverse Primer	0.5 μ l	1 μ l	0.2 μ M
OneTaq Hot Start DNA Polymerase	0.125 μ l	0.25 μ l	1.25 units/50 μ l PCR**
Template DNA	variable	variable	<1,000 ng
Nuclease-Free Water	to 25 μ l	to 50 μ l	

*OneTaq GC Reaction Buffer and High GC Enhancer can be used for difficult amplicons (see Description and General Guideline #3).

**For amplicons between 3–6 kb, use 2.5–5 units/50 μ l rxn

Notes: Gently mix the reaction. Collect all liquid to the bottom of the tube by a quick spin if necessary. Overlay the sample with mineral oil if using a PCR machine without a heated lid.

Transfer PCR tubes to a PCR machine and begin thermocycling:

Thermocycling conditions for a routine PCR:

STEP	TEMP	TIME
Initial Denaturation	94°C	30 seconds
30 Cycles	94°C	15–30 seconds
	45–68°C	15–60 seconds
	68°C	1 minute/kb
Final Extension	68°C	5 minutes
Hold	4–10°C	

General Guidelines:

1. **Template:**
Use of high quality, purified DNA templates greatly enhances the success of PCR reactions. Recommended amounts of DNA template for a 50 μ l reaction are as follows:

DNA	AMOUNT
Genomic	1 ng–1 μ g
Plasmid or Viral	1 pg–1 ng

2. **Primers:**
Oligonucleotide primers are generally 20–40 nucleotides in length and ideally have a GC content of 40–60%. Computer programs such as PrimerSelect™ (DNAStar Inc., Madison, WI) and Primer3 (<http://frodo.wi.mit.edu/primer3>) can be used to design or analyze primers. The final concentration of each primer in a PCR reaction may be 0.05–1 μ M, typically 0.2 μ M.

3. **Mg⁺⁺ and Additives:**
Mg⁺⁺ concentration of 1.5–2.0 mM is optimal for most PCR products generated with OneTaq Hot Start DNA Polymerase. The final Mg⁺⁺ concentration in 1X OneTaq Standard Reaction Buffer is 1.8 mM. This supports satisfactory amplification of most amplicons. However, Mg⁺⁺ can be further optimized in 0.2 mM increments using MgCl₂ (sold separately). OneTaq (Mg-Free) Standard Reaction Buffer and supplemental MgCl₂ are also available separately for complete control of Mg⁺⁺ concentration in the reaction.

Amplification of some difficult targets, like GC-rich sequences, may be improved by the use of OneTaq GC Reaction Buffer. The final Mg⁺⁺ concentration in 1X OneTaq GC Reaction Buffer is 2.0 mM. To optimize the Mg⁺⁺ concentration of the OneTaq GC Reaction Buffer, MgSO₄ should be used (sold separately). OneTaq (Mg-Free) GC Reaction Buffer and supplemental MgSO₄ are also available separately for complete control of Mg⁺⁺ concentration in the reaction.

For extremely difficult amplicons, 10–20% OneTaq High GC Enhancer can be added to reactions with OneTaq GC Reaction Buffer. The enhancer should not be used alone and typically enhances yields when other conditions have failed.

4. **Deoxynucleotides:**
The final concentration of dNTPs is typically 200 μ M of each deoxynucleotide.
5. **OneTaq Hot Start DNA Polymerase Concentration:**
We generally recommend using OneTaq Hot Start DNA Polymerase at a concentration of 25 units/ml (1.25 units/50 μ l reaction) for amplicons up to 3 kb. The optimal concentration of OneTaq Hot Start DNA Polymerase may range from 5–100 units/ml (0.25–5 units/50 μ l reaction) for specialized applications. For 3–6 kb amplicons, 2.5–5 units/50 μ l reaction is recommended. Note that in some cases, increasing the amount of enzyme in the reaction can be inhibitory.
6. **Denaturation:**
No separate activation step is required to release the hot start inhibitor from the enzyme. An initial denaturation of 30 seconds at 94°C is sufficient to amplify most targets from pure DNA templates. For difficult templates such as GC-rich sequences, a longer denaturation of 2–4 minutes at 94°C is recommended prior to PCR cycling to fully denature the template. With colony PCR, an initial 2–5 minute incubation at 94°C is recommended to lyse cells.

During thermocycling a 10–30 second denaturation at 94°C is recommended.

7. **Annealing:**
The annealing step is typically 15–60 seconds. Annealing temperature is based on the T_m of the primer pair and is typically 45–68°C. Annealing temperatures can be optimized by doing a temperature gradient PCR starting 5°C below the calculated T_m. We recommend using NEB's T_m Calculator, available at www.neb.com/TmCalculator to determine appropriate annealing temperatures for PCR.
8. **Extension:**
The recommended extension temperature is 68°C. Extension times are generally 1 minute per kb. A final extension of 5 minutes at 68°C is recommended.
9. **Cycle Number:**
Generally, 25–35 cycles yields sufficient product. Up to 45 cycles may be required to detect low copy number targets.
10. **2-step PCR:**
When primers with annealing temperatures of 68°C or above are used, a 2-step thermocycling protocol (combining annealing and extension into one step) is possible.
11. **PCR Product:**
A significant portion of the PCR products generated using OneTaq Hot Start DNA Polymerase contain dA overhangs at the 3' end; therefore the PCR products can be ligated to dT/dU-overhang vectors.

References:

1. Barnes, W.M. (1994) *Proc. Natl. Acad. Sci. USA*, 91, 2216–2220.
2. Saiki R.K. et al. (1985) *Science*, 230, 1350–1354.
3. Powell, L.M. et al. (1987) *Cell*, 50, 831–840.

Companion Products Sold Separately:

OneTaq DNA Polymerase	
#M0480S	200 units
#M0480L	1,000 units
#M0480X	5,000 units
OneTaq Standard Reaction Buffer Pack	
#B9022S	8.0 ml
OneTaq GC Reaction Buffer Pack (includes OneTaq High GC Enhancer)	
#B9023S	8.0 ml

OneTaq (Mg-free) Standard Reaction Buffer Pack #B9024S 8.0 ml

Magnesium Chloride (MgCl₂) Solution #B9021S 6.0 ml

OneTaq (Mg-free) GC Reaction Buffer Pack (includes OneTaq High GC Enhancer) #B9025S 8.0 ml

Magnesium Sulfate (MgSO₄) Solution #B1003S 6.0 ml

Deoxynucleotide Solution Set #N0446S 25 μ mol each

Deoxynucleotide Solution Mix #N0447S 8 μ mol each
#N0447L 40 μ mol each



NEW ENGLAND BIOLABS®, ONETAQ® and THERMOPOL® are registered trademarks of New England Biolabs, Inc.

DEEP VENT™ is a trademark of New England Biolabs, Inc. IGEPAL® is a registered trademark of Rhodia Operations. TWEEN® is a registered trademark of Uniqema Americas LLC.

Purchase of this product provides the purchaser with a non-exclusive license to use OneTaq® Hot Start DNA Polymerase for research purposes only.

This product is intended for research purposes only. This product is not intended to be used for therapeutic or diagnostic purposes in humans or animals.

Notice to Purchaser: Nucleic acid-based aptamers for use with thermophilic DNA polymerases are licensed exclusively by New England Biolabs, Inc. from SomaLogic, Inc. (See Patent Nos. 5,475,096; 5,670,637; 5,696,249; 5,874,557; and 5,693,502). New England Biolabs, Inc. gives the Buyer/User a non-exclusive license to use the aptamer-based OneTaq® Hot Start DNA Polymerase for RESEARCH PURPOSES ONLY. Commercial use of the aptamer-based OneTaq® Hot Start DNA Polymerase requires a license from New England Biolabs, Inc. Please contact busdev@neb.com for more information.