

Multiplex PCR 5X Master Mix



M0284S



100 reactions (50 µl vol) Lot: 0171509
RECOMBINANT Store at -20°C Exp: 9/17

Description: Multiplex PCR can simultaneously detect two or more products in a single reaction. There is an increasing demand for multiplex PCR techniques in assays conducted in research laboratories and forensic/diagnostic genotyping assays (1,2). Multiplex PCR can also be used for semi-quantitative gene expression analysis using cDNA templates.

The NEB Multiplex PCR 5X Master Mix is an easy-to-use solution featuring high quality recombinant *Taq* DNA Polymerase. The mix is optimized for high yield and robust performance. Its performance is illustrated in a 15-plex PCR reaction using human genomic DNA (Figure 1) and an 8-plex PCR reaction using cDNA products as templates (Figure 2). The 5X formulation allows the user maximal input of primers, template DNAs and additional components.

Source: An *E. coli* strain that carries the *Taq* DNA Polymerase gene from *Thermus aquaticus* YT-1.

Reaction Conditions: 1X Multiplex PCR Master Mix, DNA template and primers in a total reaction volume of 25 or 50 µl.

1X Multiplex PCR Master Mix:

20 mM Tris-HCl (pH 8.9 @ 25°C)
50 mM KCl
30 mM NH₄Cl
2.5 mM MgCl₂
100 units/ml *Taq* DNA Polymerase
0.3 mM each dNTP
3.2% glycerol
0.08% IGEPAL® CA-630
0.07% Tween® 20

Unit Definition: One unit is defined as the amount of enzyme that will incorporate 10 nmol of dNTP into acid-insoluble material in 30 minutes at 75°C.

Unit Assay Conditions: 1X ThermoPol® Reaction Buffer, 200 µM dNTPs including [³H]-dTTP and 15 nM primed M13 DNA.

Heat Inactivation: No

Quality Control Assays

15-plex PCR: The Multiplex PCR 5X Master Mix is able to amplify all bands in a 15-plex PCR using 10 ng human genomic DNA in 35 PCR cycles.

Quick Protocol:

Assemble reactions on ice. A manual hot-start practice is recommended to improve specificity. Add the master mix last and start PCR cycling immediately.

1. Add the following components to a thin-walled PCR tube on ice:

COMPONENT	25 µl REACTION	50 µl REACTION	FINAL CONCENTRATION
Multiplex PCR 5X Master Mix	5 µl	10 µl	1X
1 µM Primer Stock	3.75 µl	7.5 µl	0.15 µM (0.05–0.4 µM)
Template DNA	variable	variable	<1,000 ng
Nuclease-Free Water	to 25 µl	to 50 µl	

Notes: Gently mix the reaction. Collect all liquid to the bottom of the tube by a quick spin if necessary. Overlay the sample with mineral oil if using a PCR machine without a heated lid.

2. Transfer PCR tubes to a PCR machine with the block preheated to 95°C and begin the programmed cycling:

STEP	TEMP	TIME
Initial Denaturation	95°C	1 minute
30–40 Cycles	95°C	20 seconds
	55–68°C	1 minute
	68°C	1–2 minutes/kb*
Final Extension	68°C	5 minutes
Hold	4–10°C	

* The specified extension time is based on the longest amplicon in the reaction. For example, in a 4-plex reaction of 200, 300, 400 and 500 base pairs we recommend an extension time of 30 seconds to 1 minute at 68°C.

Usage Notes:

- Use high quality primers (desalted or HPLC purified).
- Accurately quantify and adjust primer stock concentrations to 50 µM in 0.5X TE Buffer.
- Individually test the PCR primer pairs, preferably in a temperature-gradient PCR machine.
- Mix all primers equally at 1 µM in 0.5X TE buffer.
- Test multiplex PCR with equal molar concentration of all primer pairs, preferably in a temperature-gradient PCR machine.

Multiplex PCR Guidelines

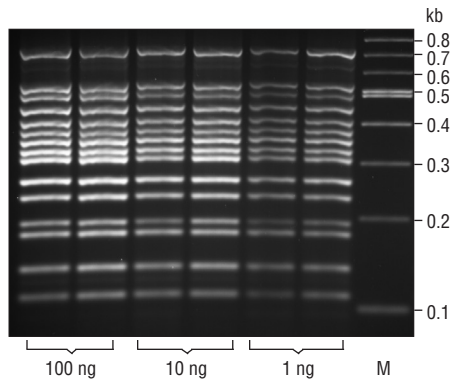


Figure 1: 15-plex PCR using varying amounts of human genomic DNA. 1X Multiplex PCR 5X Master Mix was used with 0.15 µM of each primer. The cycling conditions were 95°C for 1 minute, 35 cycles of 95°C for 20 seconds, 60°C for 1 minute and 68°C for 2 minutes. Marker M is the 2-Log DNA Ladder (NEB #N3200).

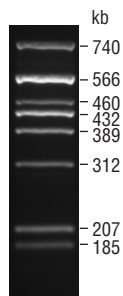


Figure 2: 8-plex PCR using cDNA products from 1 ng human spleen total RNA. Cycling conditions were 95°C for 1 minute, 30 cycles of 95°C for 20 seconds, 60°C for 30 seconds and 68°C for 2 minutes.

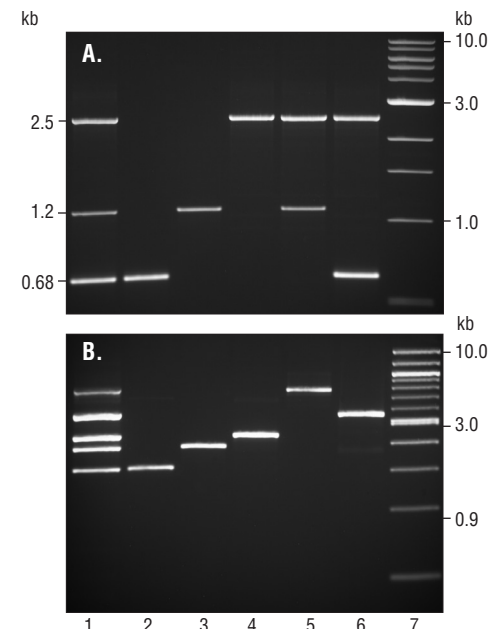


Figure 3: Comparison of PCR product yields between single-plex and multiplex PCR reactions.

Figure A shows amplification of human genomic DNA fragments (sizes are listed to the left of the gel). Lane 1 is a 3-plex reaction, Lanes 2–4 are single-plex reactions, and Lanes 5–6 are 2-plex reactions; Lane 7 is the 1 kb DNA Ladder (NEB #N3232).

Figure B shows the results of expression analysis of five mRNAs using cDNA templates (first strand synthesis was carried out using the ProtoScript Kit with human spleen total RNA); Lane 1 is a 5-plex PCR from cDNA reactions, while Lanes 2–6 are single-plex PCR reactions; Lane 7 is the 2-Log DNA Ladder (NEB #N3200).

Reaction Setup: Nonspecific primed synthesis during reaction setup and first heating cycle have been identified as a source of undesired products in some PCR reactions. This can often be avoided by doing a manual “hot-start”. To carry out a manual hot-start, assemble reaction components except for the master mix and heat up to 95°C for 2 minutes, pause, add the master mix to the tube and then immediately start PCR cycling.

An alternative convenient manual “hot-start” can be carried out as follows: assemble all reaction components on ice, add the PCR Master Mix last and immediately transfer the reactions to a thermocycler preheated to the denaturation temperature (95°C).

(see other side)

Template: The quality of the DNA template has a great impact on the PCR amplification. For DNA samples of high complexity such as human genomic DNA, we recommend 10 ng to 1 µg template DNA in a 50 µl reaction. For DNA of low complexity, such as lambda DNA or plasmid DNA, we recommend 10 pg to 10 ng template DNA in a 50 µl reaction.

Primers:

1. Primer Design

Primer design is critical to successful multiplex PCR reactions. Primers are generally 24–35 nucleotides in length and ideally have a GC content of 40–60% (preferably 50–60%). Try to avoid complementary sequences at the 3' end of all primers, runs of three or more G/C at the 3' end, and secondary structures within primers. Computer programs such as PrimerSelect™ (DNASar Inc., Madison, MI) and Primer3 (<http://frodo.wi.mit.edu/primer3>) can be used to design or analyze single primer pairs.

The melting temperature (T_m) of all primers for mPCR should be greater than 60°C according to the formula $T_m (^{\circ}\text{C}) = 2 \times (nA+nT) + 4 \times (nG+nC)$. Primers with T_m higher than 68°C are preferred because the difference in T_m of primer pairs does not affect performance as much.

2. Primer Quality and Molar Concentration

Primers should be purchased desalted or HPLC-purified as the primer quality is a critical factor for good multiplex PCR reactions. Primers should be dissolved in 0.5X TE buffer (5 mM Tris-HCl, 0.5 mM EDTA, pH 8.0) and the concentration should be accurately measured with a spectrophotometer. The molar concentration should be calculated using the molar extinction coefficient (ϵ_{260}) and absorbance at 260 nm.

$$\text{Molar conc. of primers (M)} = A_{260} / \epsilon_{260}$$

$$\epsilon_{260} = 0.89 \times (nA \times 15480 + nC \times 7340 + nG \times 11760 + nT \times 8850) \text{ where } n \text{ is the number of respective bases.}$$

For example, if a primer with 6A, 7C, 8G, and 9T, then its ϵ_{260} is 283,011 [$0.89 \times (6 \times 15480 + 7 \times 7340 + 8 \times 11760 + 9 \times 8850)$].

Adjust the concentration of the primer stock to 50 µM (store at –20°C to –80°C). Mix all primers at equimolar concentration to 1 µM in 0.5X TE buffer and store in small aliquots at –20°C or –80°C. Repeated freeze-thaw cycles should be avoided since they may lead to primer degradation.

The final concentration of each primer in a typical mPCR reaction is between 0.05–0.4 µM. In most cases, a final concentration of 0.15 µM gives satisfactory results. Increasing the primer concentration up to 0.4 µM may increase the yield.

The Multiplex PCR 5X Master Mix is used at a final concentration of 1X in most cases; however, in some cases, the Multiplex PCR 5X Master Mix can be used as low as 0.8X, or up to final 1.5X to increase product yields.

3. Annealing temperature

Single-plex PCR should first be performed for each pair of primers, testing a gradient of annealing temperature to determine the optimal conditions. If the single-plex PCR gives non-specific PCR bands or very low yield, the primers should be re-designed since they are unlikely to perform well in mPCR. In multiplex PCR reactions, choose an annealing temperature that allows all the single-plex PCR reactions to give specific products.

If you cannot perform temperature-gradient PCR reactions, 60°C is a good starting point. If some bands are missing, lower annealing temperature in 1.5°C steps. If non-specific bands exist, increase annealing temperature in 1.5°C steps.

Reaction Parameters:

1. Mg⁺⁺ and additives

The Mg⁺⁺ concentration in Multiplex PCR 5X Master Mix is 12.5 mM, which gives a final 2.5 mM at 1X in PCR reactions. This gives satisfactory amplification of most amplicons. However, Mg⁺⁺ can be further optimized in 0.5–1.0 mM increments using MgCl₂.

For some difficult targets such as GC-rich sequences, additives such as DMSO (3), may be included to improve amplification.

2. Denaturation

An initial 1–2 minute denaturation at 95°C is recommended prior to PCR cycling to fully denature the DNA.

Subsequent denaturation cycles should be 5–30 seconds.

3. Annealing

The annealing step is typically 30 seconds to 1 minute. Annealing temperature can be optimized by doing a temperature gradient PCR starting 5°C below the calculated T_m . We recommend using NEB's T_m Calculator, available at www.neb.com/TmCalculator to determine appropriate annealing temperatures for PCR.

4. Extension

The recommended extension temperature is 68°C. Extension time is based on the size of the largest amplicon in the mPCR reaction. An extension rate of 1 minute per kb is recommended for multiplex PCR reactions with five pairs of primers or less and 2 minutes per kb for multiplex PCR reactions with more than six pairs of primers. A final extension of 5 minutes at 68°C is recommended.

5. Cycle number

Generally, 30–35 cycles yield sufficient product. Up to 40 cycles may be required to detect low-copy-number.

6. 2-step PCR

When primers with annealing temperatures above 60°C are used, a 2-step PCR protocol is possible.

STEP	TEMP	TIME
Initial Denaturation	95°C	1 minute
30–40 Cycles	95°C	20 seconds
	60–68°C	1–2 minutes/kb
Final Extension	68°C	5 minutes
Hold	4–10°C	

Notes: The Multiplex PCR 5X Master Mix is stable for fifteen freeze-thaw cycles when stored at –20°C. Multiplex PCR 5X Master Mix is also stable for three months at 4°C, so for frequent use, an aliquot may be kept at 4°C.

Troubleshooting Guide:

Problem: Little or no product

- Insufficient amount of template DNA
- Poor quality template DNA
- Insufficient number of cycles
- Annealing temperature too high

Problem: Missing bands

- Poor quality primers
- Poor quality template DNA
- Non-equal molar concentration of primers
- Poor primer design or performance
- Annealing temperature too high
- Increase extension time to 2 minutes per kb

Problem: Non-specific bands

- Poor quality primers
- Annealing temperature too low
- Too many PCR cycles
- Amplification of pseudogene sequences

References:

1. Beggs, A.H. et al. (1990) *Hum. Genet.*, 86, 45–48.
2. Krenke, B.E. et al. (2002) *J. Forensic Sci.*, 47, 773–785
3. Sun, Y., Hegamyer, G. and Colburn, N. (1993) *Biotechniques*, 15, 372–374.

™ 5 Annealing temperature



NEW ENGLAND BIOLABS® and THERMOPOL® are registered trademarks of New England Biolabs, Inc.

IGEPAL® is a registered trademark of Rhodia Operations.

TWEEN® is a registered trademark of Uniqema Americas LLC.

This product is intended for research purposes only. This product is not intended to be used for therapeutic or diagnostic purposes in humans or animals.